

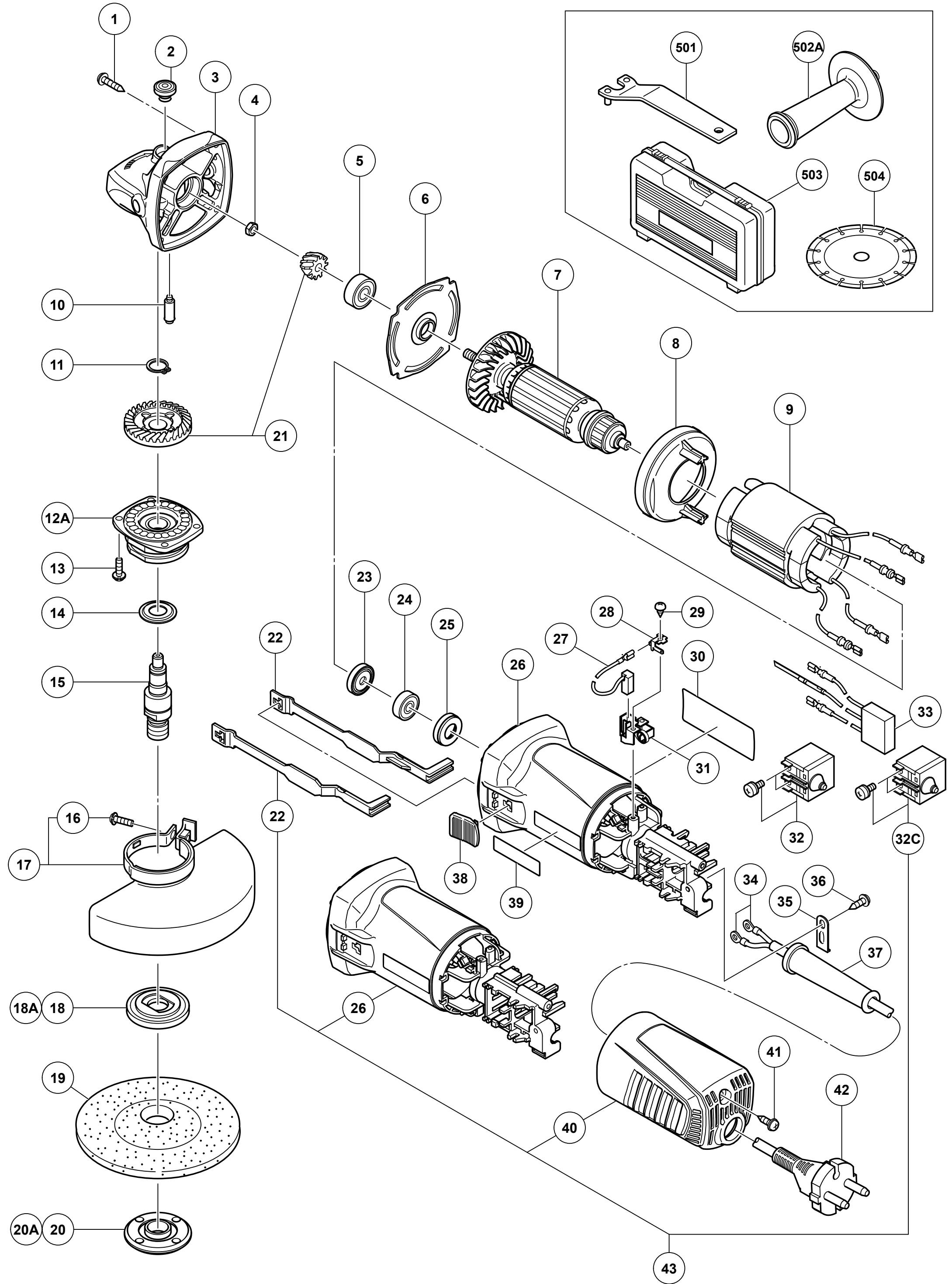
# HIKOKI

## DISC GRINDER G12SR4

| Item Nb. | Code Nb. | Description                               | Nb. Used | Remarks   |
|----------|----------|---|----------|---|
| 1        | 328643   | TAPPING SCREW(W/FLANGE) D4X23 (BLACK)     | 4        |   |
| 2        | 301944   | PUSHING BUTTON                            | 1        |   |
| 3        | 339146   | GEAR COVER ASS'Y                          | 1        | INCLUD. 2, 10   |
| 4        | 309191   | SPECIAL NUT M6                            | 1        |   |
| 5        | 338337   | BALL BEARING 608SS                        | 1        |   |
| 6        | 338850   | BEARING HOLDER                            | 1        |   |
| *7       | 361016C  | ARMATURE 110V                             | 1        |   |
| *7       | 361016E  | ARMATURE 220V-240V                        | 1        |   |
| 8        | 338853   | FAN GUIDE                                 | 1        |   |
| *9       | 340016C  | STATOR 110V-127V                          | 1        |   |
| *9       | 340016E  | STATOR 220V-230V                          | 1        |   |
| 10       | 301943   | LOCK PIN                                  | 1        |   |
| 11       | 316487   | RETAINING RING FOR D11 SHAFT              | 1        |   |
| 12A      | 338849   | PACKING GLAND                             | 1        |   |
| 13       | 328628   | SEAL LOCK SCREW(W/WASHER) M4X12           | 4        |   |
| 14       | 328185   | WASHER (A)                                | 1        |   |
| *15      | 330700   | SPINDLE                                   | 1        |   |
| 16       | 308386   | MACHINE SCREW(W/SP. WASHER) M5X16( BLACK) | 1        |   |
| 17       | 338848   | WHEEL GUARD ASS'Y                         | 1        | INCLUD. 16  |
| *18A     | 376067   | WHEEL WASHER                              | 1        |   |
| *20A     | 339579   | WHEEL NUT M4                              | 1        |   |
| 21       | 339265   | GEAR AND PINION SET                       | 1        |   |
| *22      | 338855   | SLIDE BAR                                 | 1        | EXCEPT FOR MODEL(S)<br>SINCE 6. 2020 FOR MODEL(S)       |
| *22      | 370023   | SLIDE BAR                                 | 1        | TILL 5. 2020 FOR MODEL(S)                               |
| 23       | 321722   | DUST SEAL                                 | 1        |   |
| 24       | 339145   | BALL BEARING 626ZZ                        | 1        |   |
| 25       | 309929   | RUBBER BUSHING                            | 1        |   |
| *26      | 339140   | HOUSING                                   | 1        | EXCEPT FOR MODEL(S)<br>SINCE 6. 2020 FOR MODEL(S)       |
| *26      | 370018   | HOUSING                                   | 1        | TILL 5. 2020 FOR MODEL(S)                               |
| 27       | 999067   | CARBON BRUSH 6. 5X7. 5X14 ( 1 PAIR)       | 2        |   |
| 28       | 339185   | TAB TERMINAL                              | 2        |   |
| 29       | 328210   | TAPPING SCREW D3X8                        | 4        |   |
| 30       |          | NAME PLATE                                | 1        |   |
| 31       | 333844   | BRUSH HOLDER                              | 2        |   |
| *32      | 339149   | PUSHING BUTTON SWITCH                     | 1        |   |
| *32C     | 377010   | PUSHING BUTTON SWITCH 110V                | 1        | SINCE 12. 2020 FOR MODEL(S)                             |
| *32C     | 376230   | PUSHING BUTTON SWITCH 220V-240V           | 1        | SINCE 6. 2020 FOR MODEL(S) 220V-240V                    |
| *33      | 339148   | NOISE SUPPRESSOR 100V-110V                | 1        | FOR GBR (110V), MODEL(S)                                |
| *33      | 339147   | NOISE SUPPRESSOR 220V-240V                | 1        | FOR EUROPE, AUS, NZL, GBR (230V), RUS, SAF,<br>MODEL(S) |
| *34      | 980063   | TERMINAL                                  | 2        |   |
| *34      | 311741   | TERMINAL                                  | 2        | FOR MODEL(S)  |
| *35      | 338334   | CORD CLIP                                 | 1        |   |
| 36       | 305720   | TAPPING SCREW(W/FLANGE) D4X12             | 1        |   |
| *37      | 953327   | CORD ARMOR D8. 8                          | 1        |   |
| 38       | 338854   | SLIDE SWITCH KNOB                         | 1        |   |
| 39       |          | BRAND LABEL                               | 1        |   |
| *40      | 339141   | TAIL COVER                                | 1        | EXCEPT FOR MODEL(S)<br>SINCE 6. 2020 FOR MODEL(S)       |
| *40      | 370019   | TAIL COVER                                | 1        | TILL 5. 2020 FOR MODEL(S)                               |
| 41       | 305812   | TAPPING SCREW(W/FLANGE) D4X16 (BLACK)     | 1        |   |

\* ALTERNATIVE PARTS





MODEL  
G12SR4