

HIKOKI

ROTARY HAMMER DH45MEY

| Item No. | Code No. | Description | Nb. Used | Remarks |
|----------|----------|---------------------------------------|----------|------------|
| 1 | 337562 | FRONT CAP | 1 | |
| 2 | 318590 | STOPPER RING | 1 | |
| 3 | 338155 | RETAINER WASHER | 1 | |
| 4 | 338154 | GRIP | 1 | |
| 5 | 339053 | RETAINER DAMPER (A) | 1 | |
| 6A | 370669 | BIT LOCK HOLDER | 1 | |
| 7 | 339051 | THRUST PLATE | 1 | |
| 8 | 339052 | RETAINER SPRING | 1 | |
| 9 | 337557 | SPRING HOLDER (A) | 1 | |
| 10 | 872470 | O RING (S-26) | 1 | |
| 11 | 998471 | HEX. SOCKET HD. BOLT (W FLANGE) M5X12 | 1 | |
| 12 | 338120 | CYLINDER CASE COVER | 1 | |
| 13 | 318757 | RETAINING RING D85 | 1 | |
| 14 | 321839 | RETAINING RING FOR D62 HOLE | 1 | |
| 15 | 6007DD | BALL BEARING 6007DDUAV2S | 1 | |
| 16 | 321297 | BEARING WASHER | 1 | |
| 17 | 321301 | OIL SEAL | 1 | |
| 18 | 338121 | CYLINDER CASE | 1 | |
| 19 | 991712 | HEX. SOCKET HD. BOLT (W FLANGE) M6X25 | 4 | |
| 20 | 338142 | O RING (F) | 1 | |
| 21 | 338124 | RETAINER DAMPER HOLDER | 1 | |
| 22 | 338123 | RETAINER DAMPER (B) | 1 | |
| 23 | 339047 | DAMPER SLEEVE | 1 | |
| 24 | 338122 | RETAINER DAMPER WASHER | 1 | |
| 25A | 370654 | BIT LOCK | 2 | |
| 26 | 338125 | RETAINER SLEEVE | 1 | |
| 27 | 313057 | NEEDLE PIN D6X6 | 4 | |
| 28 | 324921 | O RING (C) | 1 | |
| 29 | 338126 | SECOND HAMMER | 1 | |
| 30 | 338127 | DAMPER WASHER | 1 | |
| 31 | 324923 | DAMPER | 1 | |
| 32 | 338128 | DAMPER HOLDER | 1 | |
| 33 | 338129 | CYLINDER | 1 | |
| 34 | 338133 | STRIKER | 1 | |
| 35 | 338134 | O RING (E) | 1 | |
| 36 | 338136 | LOCK SPRING WASHER | 1 | |
| 37 | 338130 | SPRING HOLDER (B) | 1 | |
| 38 | 338137 | LOCK SPRING | 1 | |
| 39A | 338135 | LOCK SLEEVE | 1 | |
| 40 | 338131 | CLUTCH SPRING | 1 | |
| 41 | 338132 | CLUTCH | 1 | |
| 42 | 338138 | SLEEVE | 1 | |
| 43 | 338157 | SLIDER | 1 | |
| 44 | 338139 | METAL (A) | 1 | |
| 45 | 338140 | METAL WASHER | 1 | |
| 46 | 338141 | BEVEL GEAR | 1 | |
| 47 | 338134 | O RING (E) | 1 | |
| 48 | 338147 | PISTON | 1 | |
| 49A | 375273 | PISTON PIN | 1 | |
| 50 | 339049 | CONNECTING ROD ASS'Y | 1 | INCLUD. 51 |
| 51 | 335303 | NEEDLE BEARING | 1 | |
| 52 | 961501 | HEX. HD. TAPPING SCREW D5X60 | 2 | |
| 53 | 944954 | BEARING WASHER | 1 | |

* ALTERNATIVE PARTS

HIKOKI**ROTARY HAMMER DH45MEY**

| Item Nb. | Code Nb. | Description | Nb. Used | Remarks |
|----------|----------|---|----------|--------------------|
| 54 | 6201VV | BALL BEARING 6201VV | 1 | |
| *55 | 340899 | STATOR SENSOR PCB SET 220V-240V | 1 | |
| 56 | 338168 | HOUSING | 1 | |
| 57 | 333225 | DUST SEAL | 1 | |
| 58 | 338170 | TAIL COVER | 1 | |
| 59 | 998485 | HEX. SOCKET HD. BOLT (W FLANGE) M5X14 | 4 | |
| 60 | 6202DD | BALL BEARING 6202DD | 1 | |
| 61 | 980700 | DUST WASHER (B) | 1 | |
| *62 | 360992 | ROTOR | 1 | |
| *63 | 338183 | CONTROLLER ASS'Y 220V-240V | 1 | INCLUD. 64-66 |
| 64 | 339056 | RUBBER SHEET (C) | 1 | |
| 65 | 339055 | RUBBER SHEET (A) | 4 | |
| 66 | 339057 | RUBBER SHEET (D) | 1 | |
| 67 | 338184 | PANEL ASS'Y | 1 | INCLUD. 65 |
| 68 | 991690 | SEAL LOCK HEX. SOCKET HD. BOLT M5X12 | 2 | |
| 69 | 991711 | DISTANCE PIECE (B) | 2 | |
| 70 | 338173 | HANDLE (A) | 1 | |
| *71 | 338181 | FILTER PCB ASS'Y 220V-240V | 1 | INCLUD. 72 |
| 72 | 339058 | FILTER PACKING | 1 | |
| 73 | 310123 | TRANSATORY UNIT | 1 | |
| 74 | 310124 | HANDLE DAMPER | 4 | |
| 75 | 338162 | HANDLE DAMPER HOLDER | 1 | |
| 76 | 338176 | BELLOW\$ | 1 | |
| 77 | 337588 | TRIGGER | 1 | |
| 78 | 337587 | SWITCH | 1 | |
| 79 | 338174 | HANDLE (B) | 1 | |
| 80 | 307028 | TAPPING SCREW(W FLANGE) D4X25 (BLACK) | 5 | |
| 81 | 958308Z | PI LLAR TERMINAL (A) | 1 | |
| *82 | 940778 | CORD ARMOR D10.7 | 1 | |
| 83 | 960266 | CORD CLIP | 1 | |
| 84 | 984750 | TAPPING SCREW(W FLANGE) D4X16 | 2 | |
| *85 | 500390Z | CORD | 1 | (CORD ARMOR D10.7) |
| 86 | 338175 | HANDLE SHAFT | 1 | |
| 87 | 338197 | BACK COVER | 1 | |
| 88 | 994192 | HEX. SOCKET HD. BOLT (W FLANGE) M5X16 | 4 | |
| 89 | | NAME PLATE | 1 | |
| 90 | 338171 | ON LOCK BUTTON | 1 | |
| 91 | 338172 | ON LOCK SPRING | 1 | |
| 92 | 338185 | ON LOCK PCB (A) ASS'Y | 1 | INCLUD. 93 |
| 93 | 339059 | PACKING (A) | 1 | |
| 94 | 330209 | SI DE HANDLE | 1 | |
| 95 | 337577 | WING BOLT | 1 | |
| 96 | 949859 | ROLL PIN D2X8 (10 PCS.) | 1 | |
| 97 | 338166 | MDUNT | 1 | |
| 98 | 949556 | NUT M6 (10 PCS.) | 1 | |
| 99 | 333227 | HANDLE BOLT | 1 | |
| 100 | 338165 | BAND | 1 | |
| 101 | 949859 | ROLL PIN D2X8 (10 PCS.) | 1 | |
| 102 | 939540 | RETAI NING RING FOR D10 SHAFT (10 PCS.) | 1 | |
| 103 | 338144 | CRANK SHAFT | 1 | |
| 104 | 971750 | FEATHER KEY 3X3X20 | 1 | |
| 105 | 948391 | RETAI NING RING FOR D40 HOLE | 1 | |
| 106 | 6203DD | BALL BEARING 6203DDCPS2L | 1 | |

* ALTERNATIVE PARTS

HIKOKI

ROTARY HAMMER DH45MEY

| Item Nb. | Code Nb. | Description | Nb. Used | Remarks |
|----------|----------|---|----------|--------------------------------|
| 107 | 996363 | O R I N G (S - 40) | 1 | |
| 108 | 878713 | CYLINDER O R I N G (B) | 2 | |
| 109 | 338191 | WASHER | 2 | |
| 110 | 338195 | WEI GHT | 1 | |
| 111 | 338179 | ON LOCK PCB (B) | 1 | |
| 112 | 338192 | WEI GHT P I N | 1 | |
| 113 | 306061 | SEAL LOCK HEX. SOCKET HD. BOLT M5X30 | 4 | |
| 114 | 338193 | LEAF SPRING (A) | 2 | |
| 115 | 328906 | SPRING HOLDER | 2 | |
| 116 | 338190 | BASE | 1 | |
| 117 | 338194 | WEI GHT BUMPER | 2 | |
| 118 | 990079 | SEAL LOCK HEX. SOCKET HD. BOLT M5X16 | 2 | |
| 119 | 339050 | FELT PACKING (D) | 1 | |
| *120B | 338161 | CRANK COVER | 1 | |
| 121 | 338177 | HEX. SOCKET HD. BOLT (W FLANGE) M5X18 | 4 | |
| 122 | 338159 | CHANGE LEVER | 1 | |
| 123 | 337567 | LEVER SPRING | 1 | |
| 124 | 959149 | STEEL BALL D4. 76 (10 PCS.) | 1 | |
| 125 | 878885 | O R I N G (S - 18) | 1 | |
| 126 | 338158 | LEVER SHAFT HOLDER | 1 | |
| 127 | 939547 | RETAI N I N G R I N G F O R D 20 S H A F T (10 P C S .) | 1 | |
| 128 | 326257 | O R I N G (I . D 74. 5) | 1 | |
| 129 | 338156 | CHANGE PLATE | 1 | |
| 130 | 986940 | SEAL LOCK HEX. SOCKET HD. BOLT M6X45 | 4 | |
| 131 | 324544 | FELT PACKING (B) | 1 | |
| 132 | 339048 | VALVE | 1 | |
| 133 | 339054 | FELT PACKING (A) | 1 | |
| 134 | 338143 | CRANK CASE | 1 | |
| 135 | 313050 | O I L S E A L (A) | 1 | |
| 136 | 338178 | S L I P C L U T C H A S S ' Y | 1 | I N C L U D . 137- 148 |
| 137 | 338150 | B E V E L P I N I O N | 1 | |
| 138 | 944109 | F E A T H E R K E Y 3X3X8 | 1 | |
| 139 | 338151 | C O L L A R | 1 | |
| 140 | 6002DD | B A L L B E A R I N G 6002DDCMPS2L | 1 | |
| 141 | 313058 | WASHER | 1 | |
| 142 | 313053 | WASHER (A) | 1 | |
| 143 | 321281 | GEAR HOLDER | 1 | |
| 144A | 331217 | NEEDLE | 10 | |
| 145 | 321282 | SPRING (C) | 10 | |
| 146 | 338152 | SECOND GEAR | 1 | |
| 147 | 321283 | SPACER | 1 | |
| 148 | 629VVM | B A L L B E A R I N G 629VV | 1 | |
| 149 | 944525 | B E A R I N G W A S H E R (C) | 1 | |
| 150 | 971745 | O I L S E A L (A) | 1 | |
| 151 | 338145 | F I R S T G E A R | 1 | |
| 152 | 338146 | S E C O N D P I N I O N | 1 | |
| 153 | 939299 | N E E D L E B E A R I N G (M661) | 1 | |
| 154 | 338167 | SEAL PACKING | 1 | |
| 155 | 321313 | SEAL LOCK HEX. SOCKET HD. BOLT M6X22 | 2 | |
| 156 | 338169 | GEAR COVER | 1 | |
| 157 | 376576 | M O U N T A S S ' Y | 1 | I N C L U D . 95- 98 |
| 158 | 376575 | S I D E H A N D L E A S S ' Y | 1 | I N C L U D . 94, 99, 100, 157 |
| | | STANDARD ACCESSORIES | | |

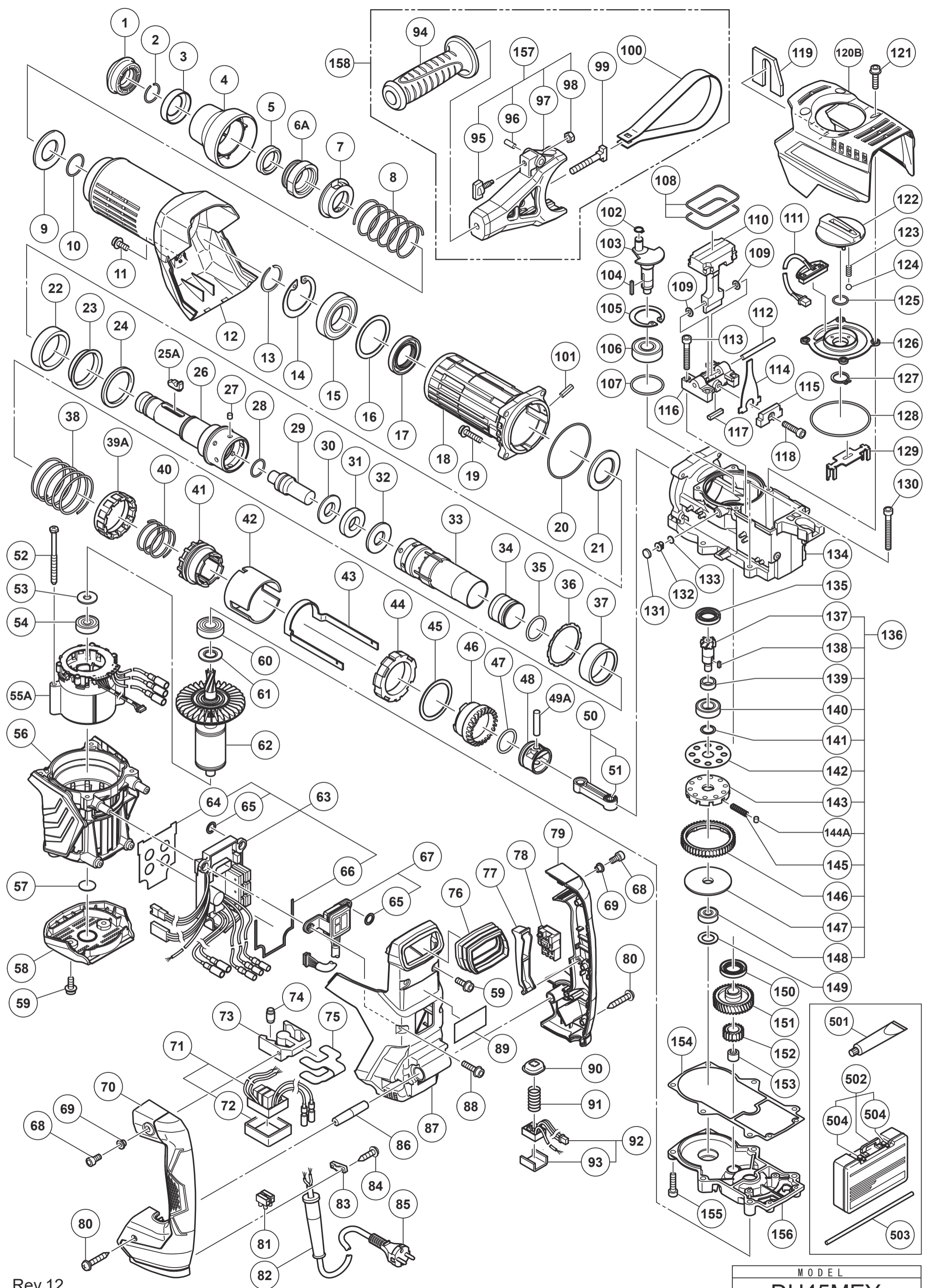
* ALTERNATIVE PARTS

HIKOKI

ROTARY HAMMER DH45MEY

| Item Nb. | Code Nb. | Description | Nb. Used | Remarks |
|----------|----------|---|----------|--------------|
| 501 | 981840 | GREASE (A) FOR HAMMER, HAMMER DRILL (30G) | 1 | |
| 502 | 339060 | CASE (PLASTIC) | 1 | INCLUDED 504 |
| 503 | 971786 | STOPPER ROD | 1 | |
| 504 | 372113 | BUCKLE | 2 | |
| | | OPTIONAL ACCESSORIES | | |
| 601 | 308471 | GREASE FOR HAMMER, HAMMER DRILL (70G) | 1 | |
| 602 | 980927 | GREASE FOR HAMMER, HAMMER DRILL (500G) | 1 | |
| 603 | 320859 | SYRINGE (BLOW OUT BULB TYPE) | 1 | |
| 604 | 318085 | SYRINGE (BELLOWS TYPE) | 1 | |
| 605 | 313448 | DRILL BIT (SDS MAX) D16X340 | 1 | |
| 606 | 313456 | DRILL BIT (SDS MAX) D16X540 | 1 | |
| 607 | 313449 | DRILL BIT (SDS MAX) D19X340 | 1 | |
| 608 | 313457 | DRILL BIT (SDS MAX) D19X540 | 1 | |
| 609 | 313450 | DRILL BIT (SDS MAX) D22X320 | 1 | |
| 610 | 313458 | DRILL BIT (SDS MAX) D22X520 | 1 | |
| 611 | 313451 | DRILL BIT (SDS MAX) D25X320 | 1 | |
| 612 | 313459 | DRILL BIT (SDS MAX) D25X520 | 1 | |
| 613 | 313452 | DRILL BIT (SDS MAX) D28X370 | 1 | |
| 614 | 313460 | DRILL BIT (SDS MAX) D28X570 | 1 | |
| 615 | 313453 | DRILL BIT (SDS MAX) D32X370 | 1 | |
| 616 | 313461 | DRILL BIT (SDS MAX) D32X570 | 1 | |
| 617 | 313454 | DRILL BIT (SDS MAX) D38X370 | 1 | |
| 618 | 313462 | DRILL BIT (SDS MAX) D38X570 | 1 | |
| 620 | 313463 | DRILL BIT (SDS MAX) D40X570 | 1 | |
| 625 | 944477 | COTTER | 1 | |
| 626 | 313465 | ADAPTER (SDS MAX) FOR SDS PLUS SHANK BIT | 1 | |
| 627 | 955994 | CORE BIT 25MM | 1 | |
| 628 | 955995 | CORE BIT 29MM | 1 | |
| 629 | 955996 | CORE BIT 32MM | 1 | INCLUDED 630 |
| 630 | 955997 | GUIDE PLATE (FOR CORE BIT 32MM) | 1 | |
| 631 | 955998 | CORE BIT 35MM | 1 | INCLUDED 632 |
| 632 | 955999 | GUIDE PLATE (FOR CORE BIT 35MM) | 1 | |
| 633 | 956000 | CORE BIT 38MM | 1 | INCLUDED 634 |
| 634 | 956001 | GUIDE PLATE (FOR CORE BIT 38MM) | 1 | |
| 635 | 955154 | CORE BIT 45MM | 1 | INCLUDED 636 |
| 636 | 955166 | GUIDE PLATE (FOR CORE BIT 45MM) | 1 | |
| 637 | 955155 | CORE BIT 54MM | 1 | INCLUDED 638 |
| 638 | 955167 | GUIDE PLATE (FOR CORE BIT 54MM) | 1 | |
| 639 | 956002 | CORE BIT 64MM | 1 | INCLUDED 640 |
| 640 | 956003 | GUIDE PLATE (FOR CORE BIT 64MM) | 1 | |
| 641 | 955157 | CORE BIT 79MM | 1 | INCLUDED 642 |
| 642 | 955168 | GUIDE PLATE (FOR CORE BIT 79MM) | 1 | |
| 643 | 956004 | CORE BIT 94MM | 1 | INCLUDED 644 |
| 644 | 956005 | GUIDE PLATE (FOR CORE BIT 94MM) | 1 | |
| 645 | 955159 | CORE BIT 105MM | 1 | INCLUDED 646 |
| 646 | 955169 | GUIDE PLATE (FOR CORE BIT 105MM) | 1 | |
| 647 | 313466 | CORE BIT SHANK (B) SDS MAX D25-35 | 1 | |
| 648 | 313467 | CORE BIT SHANK (A) SDS MAX D38-150 | 1 | |
| 649 | 956009 | CENTER PIN (B) 147L FOR CORE BIT D32-35 | 1 | |
| 650 | 955165 | CENTER PIN (A) 133L FOR CORE BIT D38-150 | 1 | |
| 651 | 321813 | DRILL CHUCK 13VLD-D | 1 | |
| 652 | 313468 | CHUCK ADAPTER (SDS MAX) | 1 | |
| 653 | 303334 | CHUCK HANDLE | 1 | |

* ALTERNATIVE PARTS



Rev.12
24.12.2021

MODEL
DH45MEY

